

# MAROUBRA BAY OOSH

## FACT SHEET

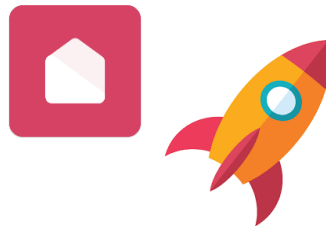
 [mboosh@jubileecs.org.au](mailto:mboosh@jubileecs.org.au)

 Phone: 0477 002 117

 Instagram: @maroubrabayoosh

### BOOKINGS

- Casual bookings are made through the Xplor Home App
- Permanent Bookings are made via Email
- 2 weeks written notice to cancel bookings



### FEES

#### Morning Session

Permanent - \$21

Casual - \$23

#### Afternoon Session

Permanent - \$24

Casual - \$26

#### Vacation Care - \$75

Statements available on your account through [home.myxplor.com](http://home.myxplor.com)

### HOURS OF OPERATION

#### Before School Care

7am-9am

#### After School Care

3pm-6pm

#### Vacation Care

7am-6pm

Close Public Holidays

Christmas Closure

25<sup>th</sup> Dec to 8<sup>th</sup> Jan



## centrelink

### CHILD CARE SUBSIDY (CCS)

When you submit your enrolment form you will be guided of how to complete your CCS.

Please provide your personal CRN details of the family and child on the enrolment form to claim your subsidy.



### DROP OFF & PICK UP

Due to Covid-19 restrictions **parents are not to come on site**

Parents wait at the gate whilst socially distancing.

Call the service number **0477 002 117** and an allocated staff member will walk down to meet you.

It is the parent's responsibility to sign the children in and out through the Xplor Home App



### FAMILY HANDBOOK & POLICIES

A Family Handbook will be sent to any new enrolment with all the information you need.

Policies can be accessed at request and are sent out monthly with our Weekly Newsletter.

### VACATION CARE

Program will be released closer to the time

Bookings through Xplor Home App after enrolment

Children age from **4 years 1 month +** (primary school age)

## ENROLMENTS START NOW!

You can get your enrolments and bookings in now ready for the school term.

**DOWNLOAD FORM** from [Maroubra Bay Public School Web](http://Maroubra Bay Public School Web) or Email [mboosh@jubileecs.org.au](mailto:mboosh@jubileecs.org.au)

Enrolment and App Guide also available on school website

Please complete all parts of the enrolment form (1 per child) and submit this to [mboosh@jubileecs.org.au](mailto:mboosh@jubileecs.org.au) along with your child's Immunisation History statement from your My Gov Medicare Page.